

The “Jungle Folk” of India



Wolf, above: “Father & Mother Wolf, Akela” etc.

Approximately the size of medium dog, 40-60 lbs.



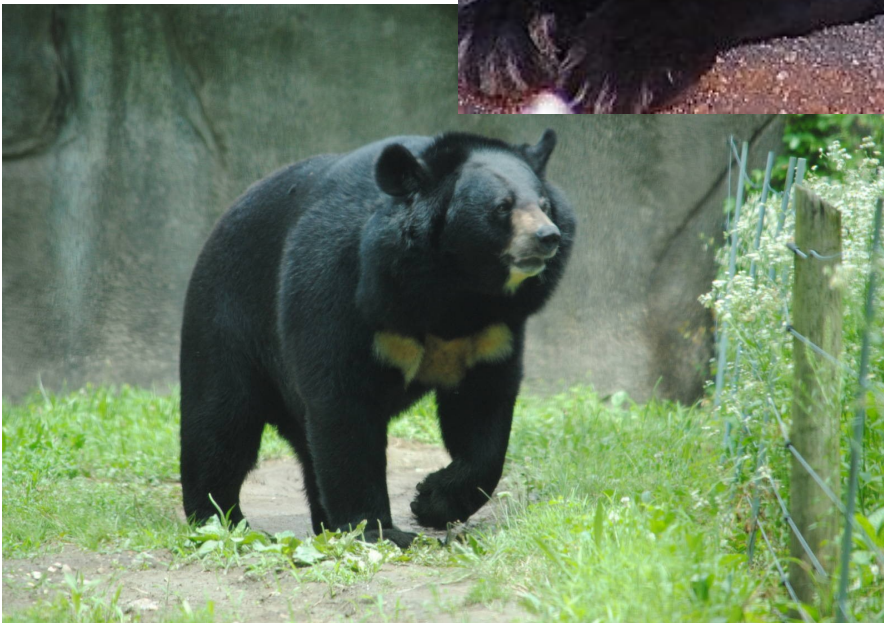
Black Panther: “Bagheera”

Black form of the leopard, with black spots on black fur.

Larger than the wolf, 4’ 8”, 125-180 lbs

Himalayan Bear: Baloo

Approximately 4’10” to 7’ 3” in size, weight 260 to 400 lbs.



Indian Rock Python



Indian Jackel: “Tabaqui”. Approx. 14-18” high, 18lbs. Smaller than the Wolf, scavenger.

Indian rock python: “Kaa”. Constrictor, size up to 20 feet long and up to 200 lbs.

Bengal Tiger: “Shere Khan”

Body length up to **10 feet (excluding the tail)**, and **350 to 700 lbs**. A tigers head may be up to 14”wide. All wild tigers are currently considered endangered.



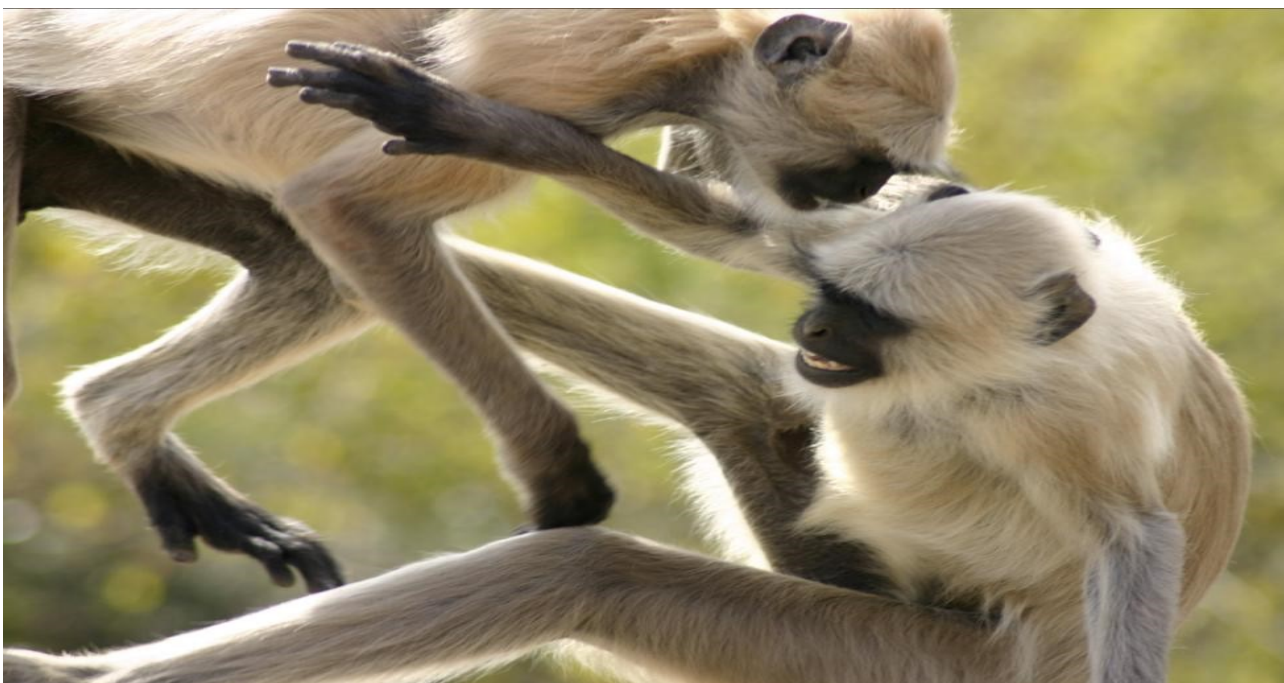


Indian Monkey—rhesus macaque : “The Bander-Log” Widely distributed throughout India. Size, approx. 21” high (excluding tail) and weighs about 21 lbs.

Below: Monkey at Indian Temple



All wild monkeys have sharp teeth, strong hands and can fight and bite.



Indian Cattle/"Bulls"/"Buffalo": Many different species, both wild and domesticated. Shown here are Zebu, below and Gaur, bottom. Large and strong.

